

These drawings are instruments of service and are the property of Howard Perلمان, AIA. Howard Perلمان expressly reserves its common law copyright and other property rights to these plans. These plans are not to be reproduced, changed or copied in any form or manner whatsoever, nor are they to be assigned to any third party, without first obtaining the expressed written permission and consent of Howard Perلمان, AIA. Written dimensions on these drawings shall have precedence over scaled dimensions.
© COPYRIGHT 2000, HOWARD PERLMAN, A.I.A.

Rev	Date	By	Description
1	11-12-02	MM	PLAN CHECK SUBMITTAL
2	01-21-03	SRMM	PLANS CHECK COMMENTS
3	04-25-03	JBM	OWNER REVISIONS

**SIMMONS MARKETPLACE
BUILDING 567**
Ann Road and Simmons Street
MARATHON COMM'L. REAL ESTATE, INC.
701 N. GREENVALLEY PARKWAY, SUITE 200
Henderson, NV 89074

Drawn/Checked By
JB / JR
Date
11-12-02
Project Number
102086
Sheet Number

A-2.1

LEGEND:

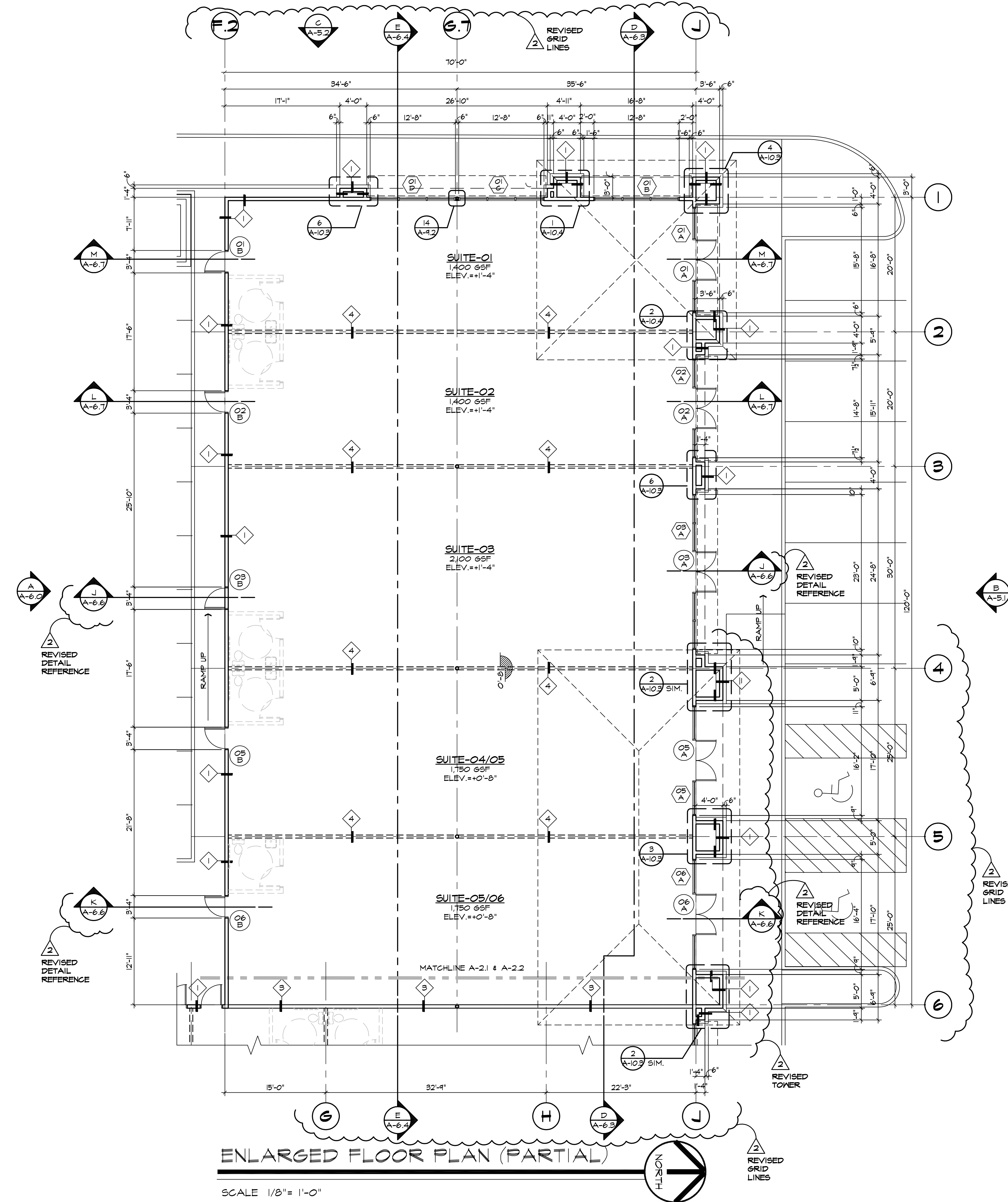
- EXTERIOR WALL, NON RATED WITH 2"x6" WOOD STUDS @ 16" O.C. MAXIMUM.
- INTERIOR WALL, 1-HR. RATED WITH 2"x6" WOOD STUDS @ 16" O.C. MAXIMUM.
- INTERIOR WALL, NON RATED WITH 2"x6" WOOD STUDS @ 16" O.C. MAXIMUM.
- FUTURE WALL PARTITION
- DOOR IDENTIFICATION
- WINDOW IDENTIFICATION
- WALL TYPE IDENTIFICATION. ENTRY DENOTES WALL DESIGNATION. SEE SHEET A-10.0 FOR TYPE OF CONSTRUCTION.
- HOSE BIBB LOCATION

GENERAL NOTES:

- FOR DOOR TYPES & SCHED., SEE SHEET A-9.0. FOR WINDOW TYPES & SCHED., SEE SHEET A-9.1. FOR DOOR & WINDOW DETAILS, SEE SHEET A-9.2.
- FOR WALL TYPES AND CONSTRUCTION DETAILS SEE SHEET A-10.0.
- ALL DIMENSIONS ARE TO FACE OF WOOD STUD, U.N.O.
- USE 5/8" MOISTURE RESISTANT GYPSUM BOARD @ RESTROOMS.
- ACCESSIBLE ENTRANCES TO RESTROOM FACILITIES SHALL BE IDENTIFIED WITH THE INTERNATIONAL SYMBOL OF ACCESSIBILITY PER '97 IBC SECTION 1103.
- FINISH FLOOR ELEVATION SHOWN IS FOR REFERENCE ONLY. SEE CIVIL DRAWINGS FOR ALL GRADING, FINISH FLOOR, AND CURB ELEVATIONS.
- ALL WORK SHALL CONFORM WITH ALL THE PROVISIONS OF THE 1997 UNIFORM BUILDING CODE (UBC), UNIFORM PLUMBING CODE (UPC), 1999 NATIONAL ELECTRICAL CODE (NEC), AND ALL OTHER APPLICABLE LOCAL ORDINANCES.

NOTES TO CONTRACTOR:

- SUBMIT SHOP DRAWINGS OF DOORS & WINDOWS FOR ARCHITECT'S REVIEW AND APPROVAL.
- SUBMIT SHOP DRAWINGS OF PRE-FABRICATED TRUSSES FOR STRUCTURAL ENGINEER'S REVIEW AND APPROVAL, PRIOR TO SUBMITTAL WITH THE BUILDING DEPARTMENT.
- SUBMIT SHOP DRAWINGS OF AUTOMATIC FIRE SPRINKLER SYSTEM FOR MECHANICAL ENGINEER'S REVIEW AND APPROVAL, PRIOR TO SUBMITTAL WITH THE BUILDING DEPARTMENT.
- SUBMIT SHOP DRAWINGS OF ROOF TOP UNITS (RTU) FOR MECHANICAL ENGINEER'S REVIEW AND APPROVAL, PRIOR TO INSTALLATION.
- IN CASE OF ANY DISCREPANCY OR UNCLEAR ITEM ON PLAN, THE CONTRACTOR SHALL NOTIFY THE ARCHITECT THROUGH RFI, PRIOR TO EXECUTION.



ENLARGED FLOOR PLAN (PARTIAL)

SCALE 1/8" = 1'-0"